



MONTHLY MEMBERSHIP PROGRESS REPORT

District 19 A

Results as of: 4/30/2015

GMT: DENNIS STEVENSON

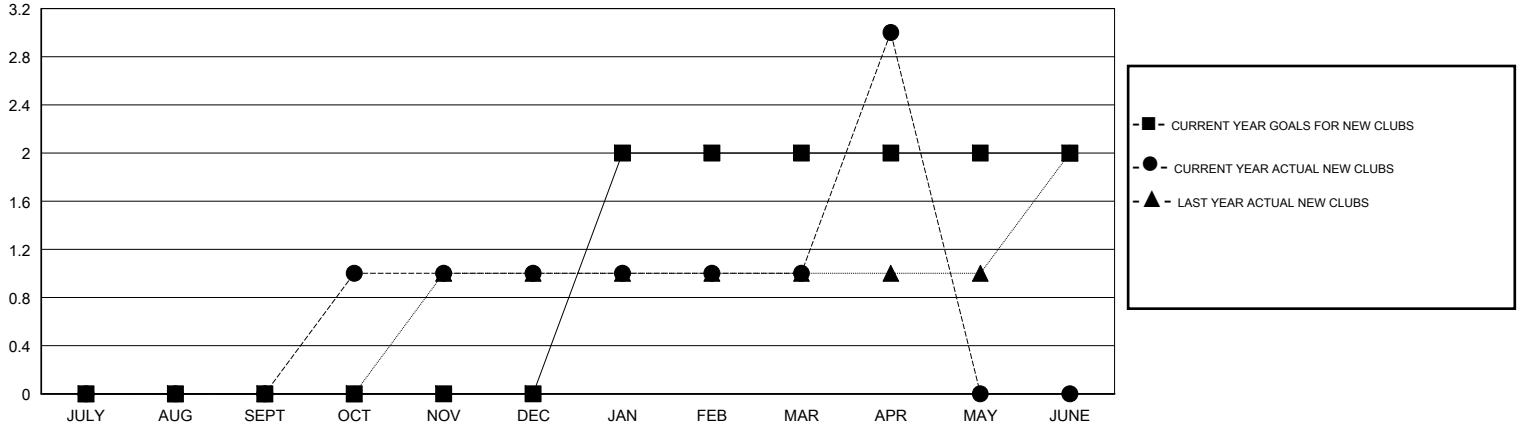
LOCATION BRITISH COLUMBIA

GMT CA 2

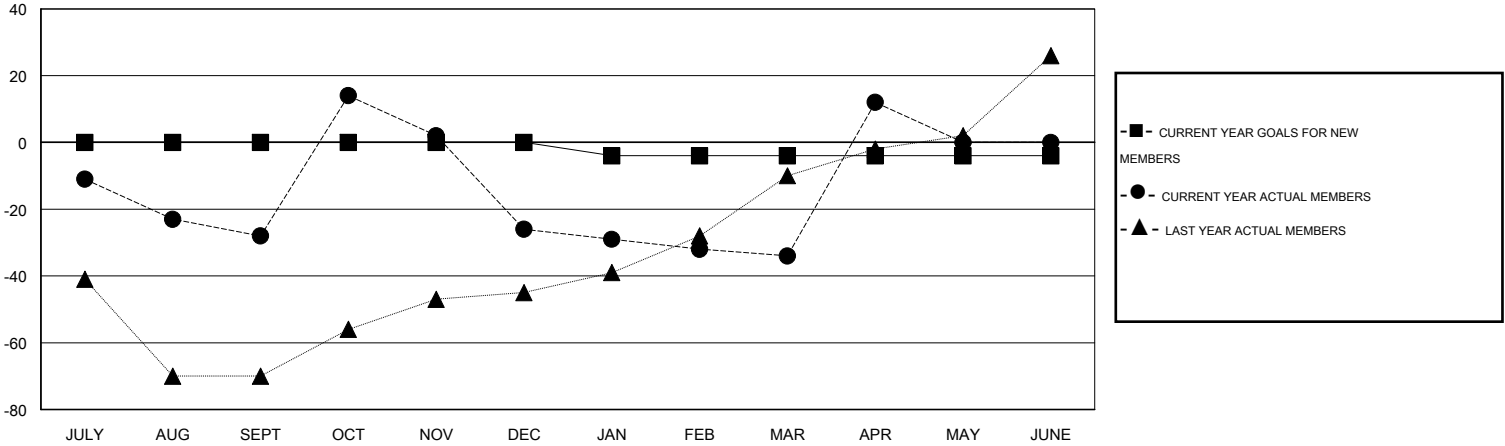
Clubs				
RESULTS FOR 2014-2015				
QUARTER	NEW CLUB GOAL	NEW CLUBS	DROPPED CLUBS	NET GAIN/LOSS
JULY/AUG/SEPT	0	0	0	0
OCT/NOV/DEC	0	1	0	1
JAN/FEB/MAR	2	0	1	-1
APR/MAY/JUNE	0	2	0	2

Members				
RESULTS FOR 2014-2015				
QUARTER	NEW MEMBER GOAL	CHARTER AND NEW MEMBERS ADDED	DROPPED MEMBERS	NET GAIN/LOSS
JULY/AUG/SEPT	0	23	51	-28
OCT/NOV/DEC	0	73	71	2
JAN/FEB/MAR	-4	19	27	-8
APR/MAY/JUNE	0	73	27	46

GOALS AND ACTUAL NEW CLUBS CUMULATIVE



GOALS AND ACTUAL MEMBERS CUMULATIVE



DROPPED CLUBS: 1

38 CLUBS OF 62 ADDED 1 OR MORE NEW MEMBERS

GENDER DISTRIBUTION	
MALE	684 (57.82%)
FEMALE	499 (42.18%)

DROPPED MEMBERS	
DECEASED	11
CLUB CANCELLED	0
OTHER	165
TOTAL	176

[CLICK HERE FOR HEALTH ASSESSMENT DATA](#)

FAMILY UNIT MEMBERS	62
HEAD OF HOUSEHOLD	31
NON-HEAD OF HOUSEHOLD	31